



55 GEORGE STREET
LONDON, W1U
Asking Price £2,600,000 Leasehold

T. +44 (0) 20 7935 0011
E. enquire@napierwatt.co.uk
WWW.NAPIERWATT.CO.UK

NAPIER WATT
PROPERTY CONSULTANTS

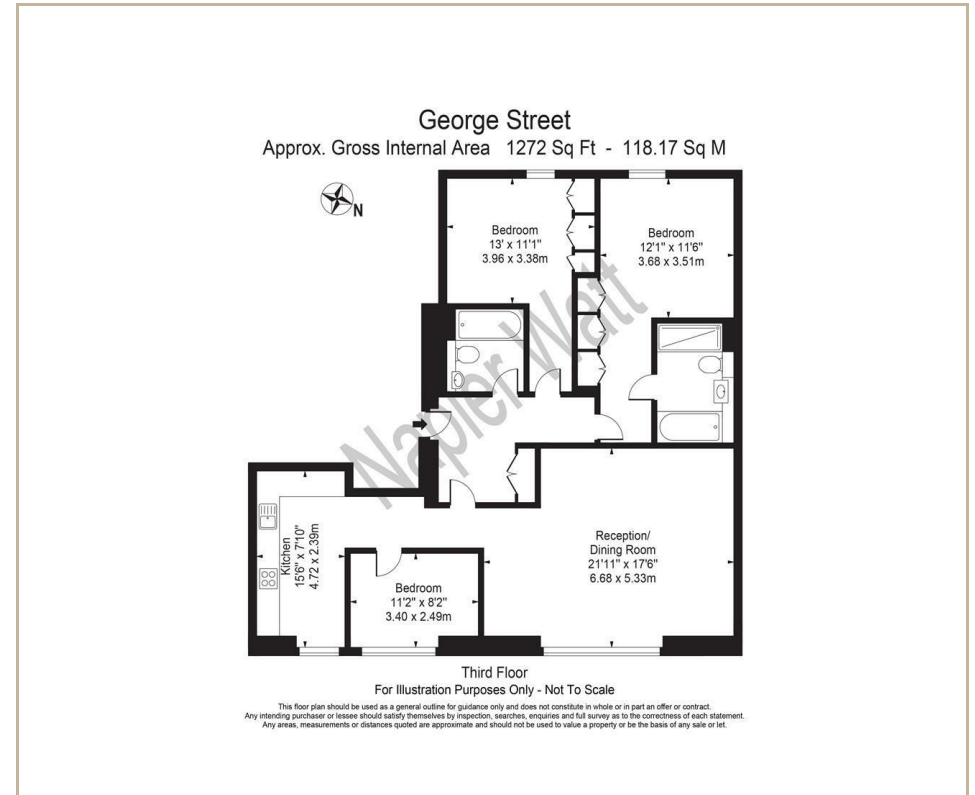
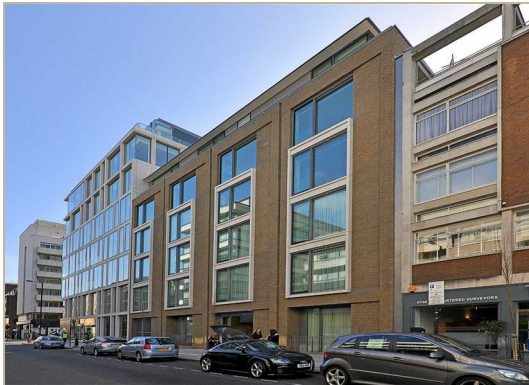
Description

A light and airy, (1,272 sqft / 118sqm) two bedroom, two bathroom third floor apartment set within a prestigious modern building.

Finished to an exceptional standard, comprising three bedrooms, a well fitted kitchen and two modern

bathrooms.

Further benefits include a peaceful communal courtyard, air conditioning throughout, secure underground parking, cctv, 24hr porter and modern lifts



TERMS

125 years (less 3 days) commencing on 25 March 2011 ie 116 years

For Clarification we wish to inform prospective purchasers that we have prepared these sales particulars as a general guide. We have not carried out a survey, nor tested the services, appliances and specific fittings. Room sizes are approximate and rounded: they are taken between internal wall surfaces and therefore include cupboards/shelves, etc. Accordingly, they should not be relied upon for carpets and furnishings. Formal notice is given that all fixtures and fittings, carpeting, curtains/blinds and kitchen equipment, whether fitted or not, are deemed to be removable by the vendor unless specifically itemised within these sales particulars.

T. +44 (0) 20 7935 0011
E. enquire@napierwatt.co.uk
WWW.NAPIERWATT.CO.UK

NAPIER WATT
PROPERTY CONSULTANTS